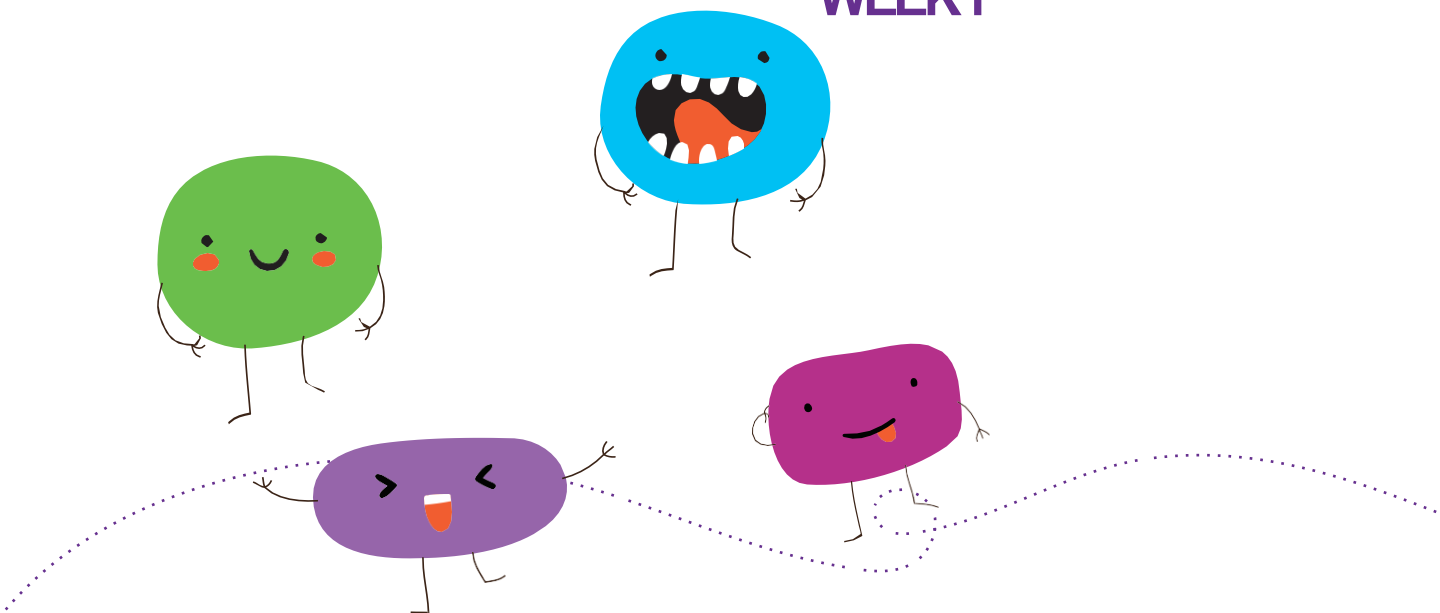


Vacation Care  
27<sup>th</sup> September- 1<sup>st</sup> October

### WEEK 1



**Monday 27<sup>th</sup>  
September**  
In-house

#### Tie Dye



Bring a white piece of clothing and tie-dye it or paint your own masterpiece.  
Cost \$71

GREEN

**Tuesday 28<sup>th</sup>  
September**  
Excursion

#### Flight Path (Golf)



- Show us your aiming skills and level up to try handed archery
- **Permission form required**  
Cost \$86

Red

**Wed 29<sup>th</sup>  
September**  
In-house

#### WHEELS DAY



- Come bring your wheels and helmet and cruise with your friends  
Cost \$65

GREEN

**Thursday 30<sup>th</sup>  
September**  
Excursion

#### Camp wallaroo



- Please bring a non-perishable lunch
- **Permission form required**  
Cost \$149

RED

**Friday 1<sup>st</sup>  
October**  
In-house

#### Jumping castle



- Yeעה Hang on to your hats it's the driver OSHC rodeo
- (Bucking Bull)  
Cost \$85

Orange

#### Driver YMCA OSHC

37 Driver Avenue, Palmerston, NT 0830

Yuni Lay Educational leader

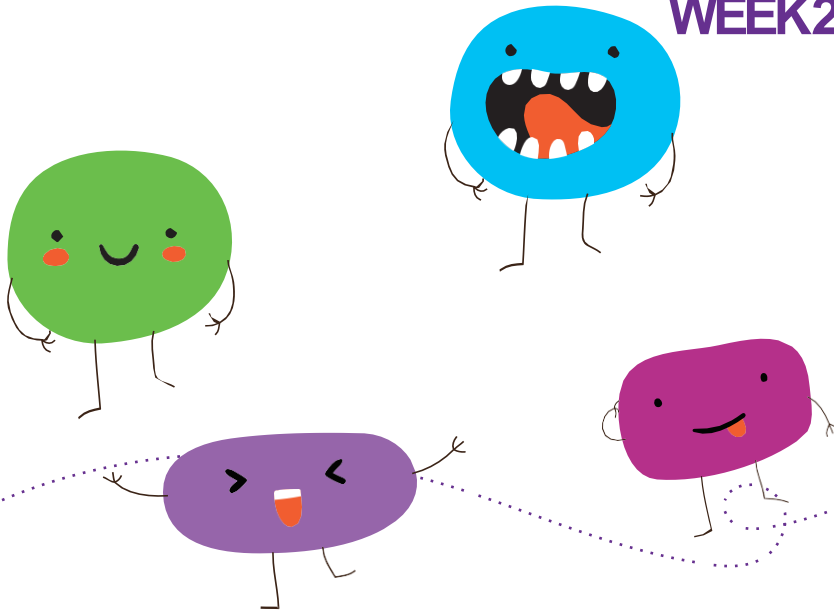
Tammy Nai-Smith Area Manager

P: 0439 991 459

E: [driver.oshc@ymca.org.au](mailto:driver.oshc@ymca.org.au)

Vacation Care  
4<sup>th</sup> October- 8<sup>th</sup> October

### WEEK 2



**Monday 4<sup>th</sup>  
October**  
In-house

#### DJ Kev



Come and get your boogie on with your friends •  
Cost: \$81

GREEN

**Tuesday 5<sup>th</sup>  
October**  
Excursion

#### Ice-skating



Come hang out at the coolest place in Darwin  
**Permission form required**  
Cost \$88

RED

**Wed 6<sup>th</sup>  
October**  
In-house

#### Crafty day



Participate in crafty activities using your fantastic imagination,  
Cost \$75

GREEN

**Thursday 7<sup>th</sup>  
October**  
Excursion

#### Kingpin



• Compete your mates in bowling, laser tag, and arcade. Lunch provided. •  
**Permission form required**  
Cost: \$106

RED

**Friday 8<sup>st</sup>  
October**  
In-house

#### PJ and movie day



• Chill in front of the big screen today and come dressed in your pyjamas  
• Pizza lunch provided  
• Cost \$70

GREEN

**Driver YMCA OSHC**  
37 Driver Avenue, Palmerston, NT 0830  
**Yuni Lay Educational leader**  
**Tammy Nai-Smith Area Manager**

**P:** 0439 991 459  
**E:** [driver.oshc@ymca.org.au](mailto:driver.oshc@ymca.org.au)